



More Bass Clef Note Reading

Bass C Pentascale

Review: A pentascale is a five-note scale.

New: Familiarize yourself with these notes that step up from **Bass C**.



• Play and say: **Bass C** **D** **E** **F** **G**
 space - line - space - line - space

Rules for Stems

Notice the stem on **Bass C** goes *up*. The stems on **Bass D, E, F, and G** go *down*.

Notes *below* the middle line
(line 3) have UP stems.



Notes *on or above* line 3
have DOWN stems.



Bass Clef Melodies

- First tap (or clap) each melody. Count aloud.
- Play each melody s-l-o-w-l-y, then at a moderate tempo.
- Notice each melody begins on a *different* note of the **Bass C Pentascale**.

Give My Regards to Broadway

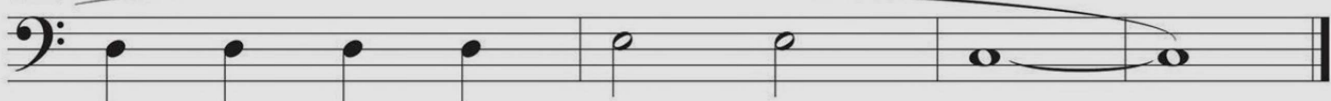
George M. Cohan

Lively

Give my re - gards to Broad - way. Re -



5 mem - ber me to Her - ald Square.



Rise and Shine

Traditional spiritual

Cheerfully

Rise ___ and shine ___ and give God the glo - ry, glo - ry.

Musical notation for 'Rise and Shine' in bass clef, 4/4 time. The melody consists of a series of quarter notes: G2, A2, B2, C3, D3, E3, F3, G3, A3, B3, C4. The first note is marked with a dynamic of *f* and a fingering of '4 on' with a question mark below it. A slur covers the entire melody.

Ode to Joy

Ludwig van Beethoven

Moderately

Musical notation for 'Ode to Joy' in bass clef, 4/4 time. The melody consists of a series of quarter notes: G2, A2, B2, C3, D3, E3, F3, G3, A3, B3, C4, D4, E4, F4, G4, A4, B4, C5. The first note is marked with a dynamic of *mp* and a fingering of '3 on' with a question mark below it. A slur covers the entire melody. A box containing the number '5' is placed at the beginning of the second staff.

All Through the Night

Traditional lullaby

Gently

Sleep, my child and peace at - tend thee, all through the night. ___

Musical notation for 'All Through the Night' in bass clef, 4/4 time. The melody consists of a series of quarter notes: G2, A2, B2, C3, D3, E3, F3, G3, A3, B3, C4, D4, E4, F4, G4, A4, B4, C5. The first note is marked with a dynamic of *p* and a fingering of '2 on' with a question mark below it. A slur covers the entire melody.

Lightly Row

Traditional

Brightly

Musical notation for 'Lightly Row' in bass clef, 4/4 time. The melody consists of a series of quarter notes: G2, A2, B2, C3, D3, E3, F3, G3, A3, B3, C4, D4, E4, F4, G4, A4, B4, C5. The first note is marked with a dynamic of *mf* and a fingering of '1 on' with a question mark below it. A slur covers the entire melody. A box containing the number '5' is placed at the beginning of the second staff.